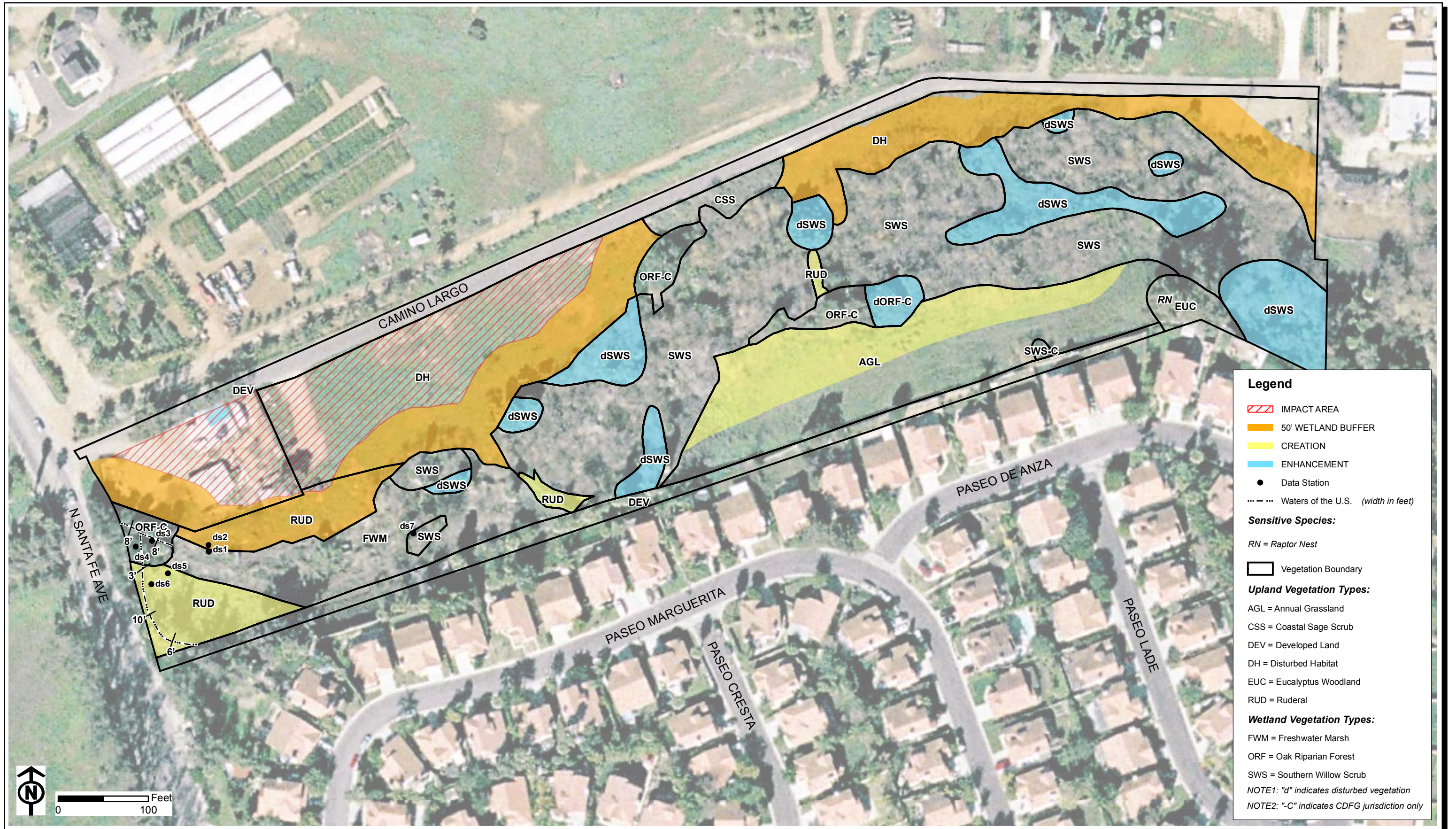


BASE MAP SOURCE: Air Photo USA, February 2005

Custom Advantage Builders Vista Property
 (OPTION 1) Biological Resources Map

FIGURE
 1



Legend

- IMPACT AREA
- 50' WETLAND BUFFER
- CREATION
- ENHANCEMENT
- Data Station
- Waters of the U.S. (width in feet)

Sensitive Species:

- RN = Raptor Nest

Vegetation Boundary

Upland Vegetation Types:

- AGL = Annual Grassland
- CSS = Coastal Sage Scrub
- DEV = Developed Land
- DH = Disturbed Habitat
- EUC = Eucalyptus Woodland
- RUD = Ruderal

Wetland Vegetation Types:

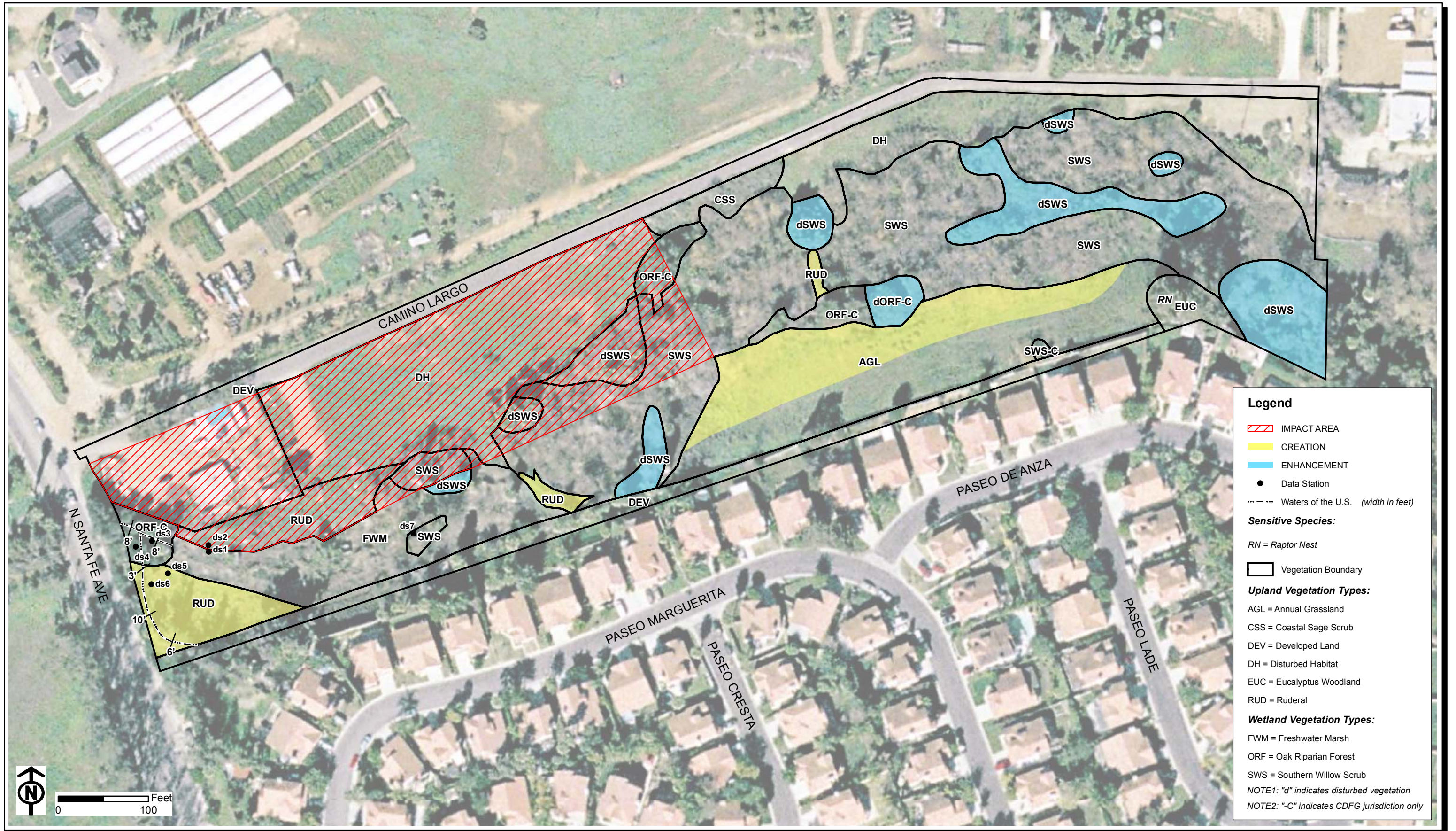
- FWM = Freshwater Marsh
- ORF = Oak Riparian Forest
- SWS = Southern Willow Scrub

NOTE1: "d" indicates disturbed vegetation
 NOTE2: "-C" indicates CDFG jurisdiction only

BASE MAP SOURCE: Air Photo USA, February 2005

Custom Advantage Builders Vista Property
 (OPTION 2) Biological Resources Map

FIGURE
 2



Legend

- ▨ IMPACT AREA
- ▭ CREATION
- ▭ ENHANCEMENT
- Data Station
- Waters of the U.S. (width in feet)

Sensitive Species:

- RN = Raptor Nest
- ▭ Vegetation Boundary

Upland Vegetation Types:

- AGL = Annual Grassland
- CSS = Coastal Sage Scrub
- DEV = Developed Land
- DH = Disturbed Habitat
- EUC = Eucalyptus Woodland
- RUD = Ruderal

Wetland Vegetation Types:

- FWM = Freshwater Marsh
- ORF = Oak Riparian Forest
- SWS = Southern Willow Scrub

NOTE1: "d" indicates disturbed vegetation
 NOTE2: "-C" indicates CDFG jurisdiction only

BASE MAP SOURCE: Air Photo USA, February 2005

Custom Advantage Builders Vista Property
 (OPTION 3) Biological Resources Map

FIGURE
 3